



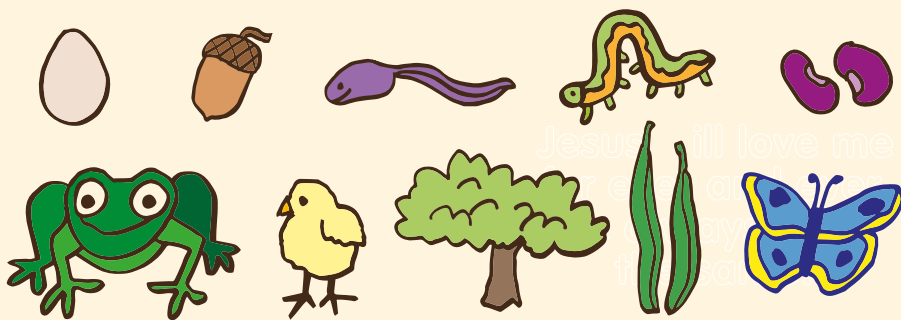
Sunday 14 November 2021
Mark 13:24-32
33rd Sunday in Ordinary Time

IN THE GOSPEL TODAY

My name is _____

BE GENEROUS!

Most things change with time. Draw a line from each of these pictures to show what they grow into.



Maze

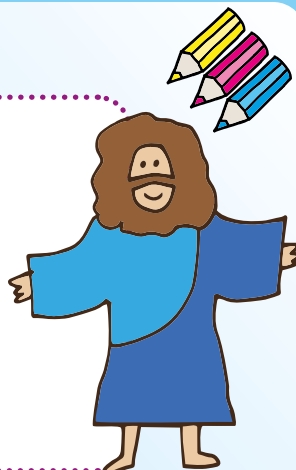
Help Jesus find his way so that he can be together with us again.



Who does God love?

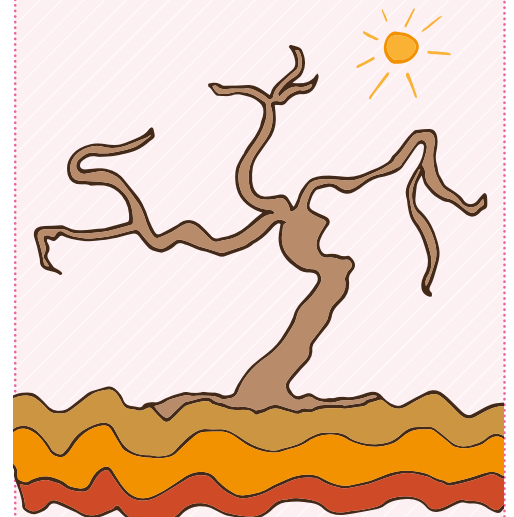
Jesus is always near us, in our hearts and the love we have in our lives.

Draw a picture of you standing close to Jesus



Other things will come and go, but Jesus will always be with us. We are to keep our eyes open because he is coming into our lives again in a special way soon. Just as we know that summer is coming when we see the buds on the trees, we know that Jesus is near.

The fig tree



The fig tree tells us that summer is near when its leaves come out. Draw the leaves on the tree to show that summer is near.

A PRAYER TO SAY

Dear Jesus, thank you for always being with me and loving me. Help me to feel your loving presence in my life. Amen.