



My name is _____

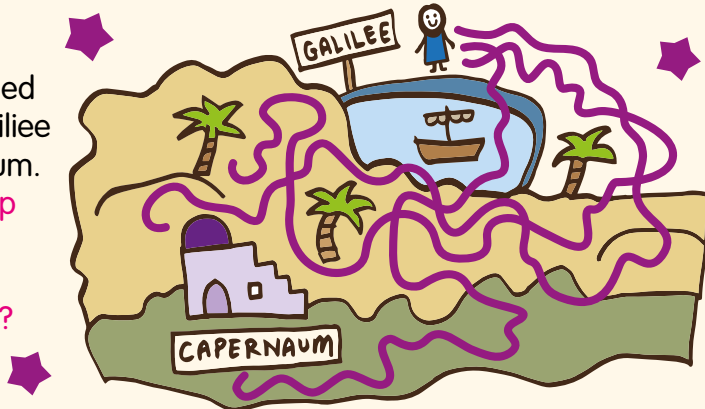
IN THE GOSPEL TODAY

Jesus' friends are arguing about who is the most important. Jesus explains that if they want to be important, they must put other people first. Following Jesus means helping and serving others. When we do, we will be happy and full of Jesus' love.

WHO IS JESUS?

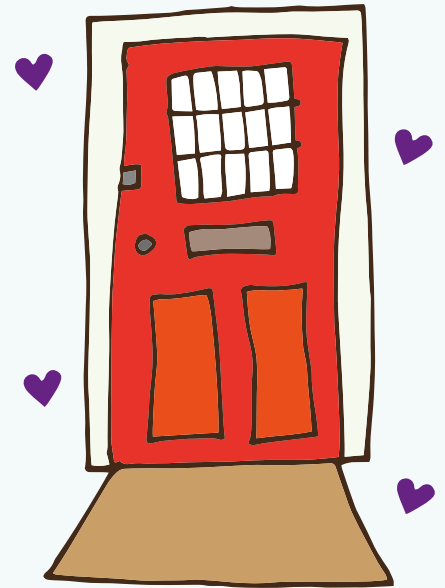
Maze

Jesus travelled through Galilee to Capernaum. Can you help him find his way to the house there?



Welcome mat

Design a doormat to show everyone that they are welcome in your home.



Word search

FIRST CARE
 BEST HELP
 LAST SERVE



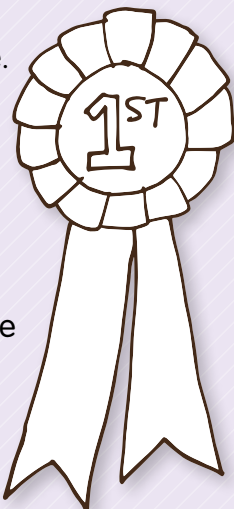
F	I	R	S	T
L	B	E	S	T
A	C	A	R	E
S	E	R	V	E
T	H	E	L	P

Unscramble the letters to see who else you welcome when you welcome someone to your home.

SSUJE _ _ _ _

Jesus shows us love

Jesus shows us how to love. He shows us how to put other people first. When we put others first we are being like Jesus. Here is a rosette for the winner of a first prize. Colour it red.



How do you think you could win this rosette? Draw a picture to show how you are going to help someone today. You could draw Jesus giving you the rosette.

A PRAYER TO SAY

Jesus, I want to be like you. Help me to be happy by serving other people, just like you did. Amen.